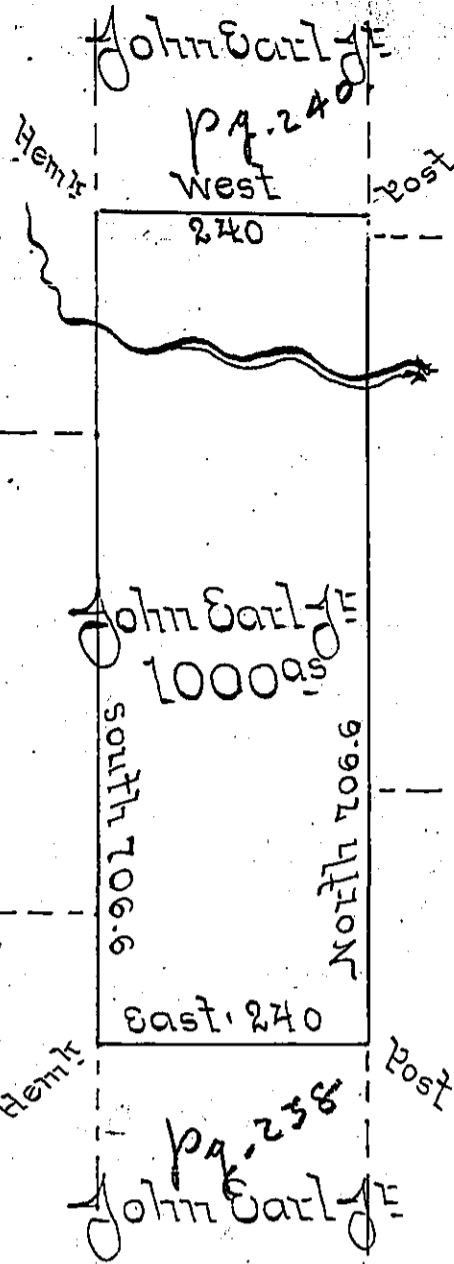


No 5433  
Geo. Mead

No 5432  
Geo. Mead

No 5431  
Geo. Mead



(Portage  
- Potter)

No 4933  
W. Willink

No 4934  
W. Willink

In pursuance of a Warrant dated Dec 24<sup>th</sup> A.D. 1855 granted to John Earl J.E. for one thousand Acres of unimproved land I have surveyed of the 4<sup>th</sup> day of January A.D. 1856 the Above described Tract of land situate in the townships of Wharton & Portage & in the County of Potter on the Waters of the Sinnamahoning and Containing one thousand Acres with the Allowance of six per cent for Roads &c

Lo J Porter Brawley Esq. }  
Surveyor General - }

Salman F Robinson  
Surveyor for  
Potter County

IN TESTIMONY that the above is a copy of the original remaining on file in the Department of Internal Affairs of Pennsylvania, made conformably to an Act of Assembly approved the 16th day of February, 1833, I have hereunto set my Hand and caused the Seal of said Department to be affixed at Harrisburg, this seventh day of May 1901.

*James White*  
Secretary of Internal Affairs.